



# CERVICAL CANCER

## Screening, Prevention, Education

### What is Cervical Cancer?



Cervical cancer is cancer that starts in the cells of the cervix. This type of cancer usually develops slowly over time. Anyone with a cervix is at risk for cervical cancer. It occurs most often in people over age 30. Long-lasting infection with certain types of human papillomavirus (HPV) is the main cause of cervical cancer.

### U.S Statistics

**13,000**

New cases of cervical cancer are diagnosed per year.

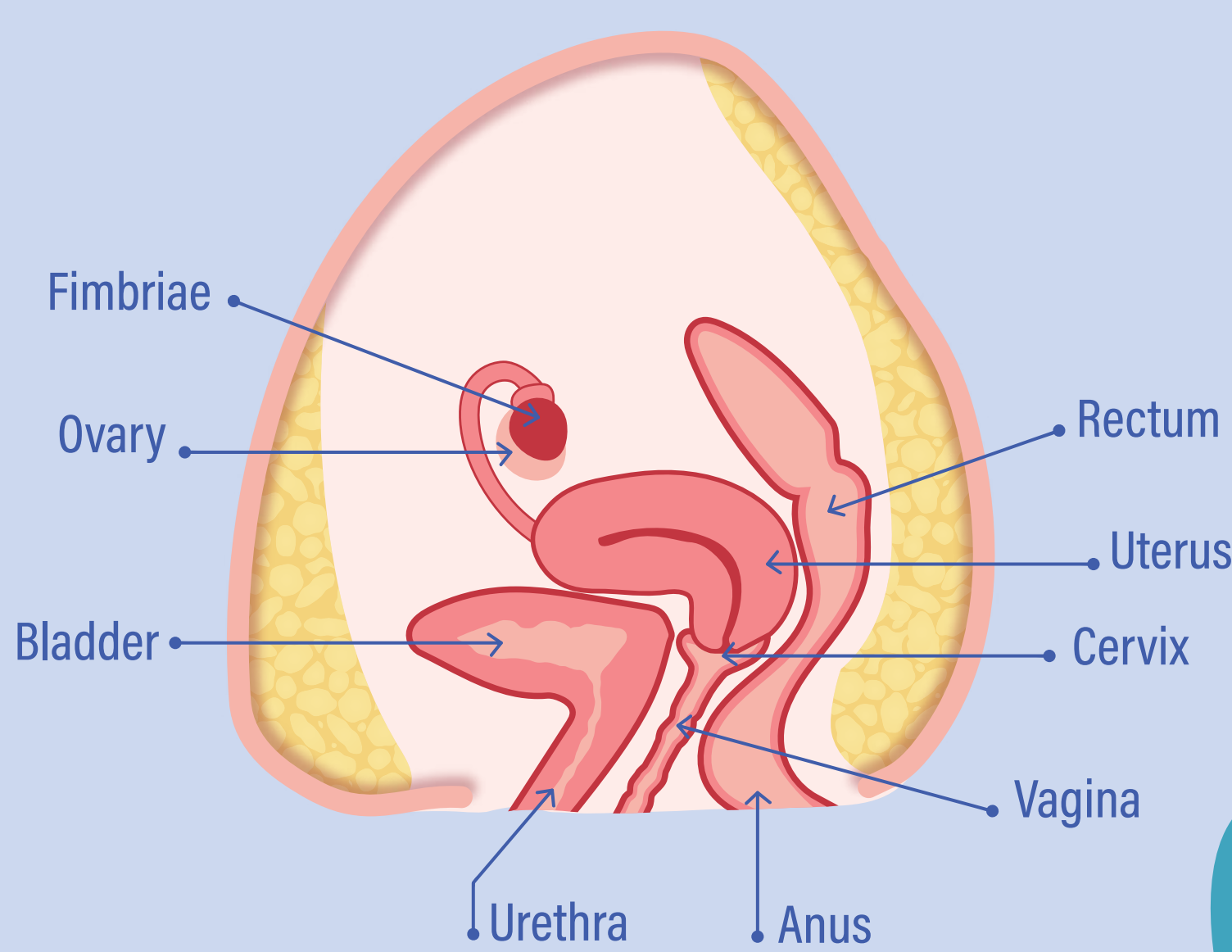
**4,000**

women die of cervical cancer per year

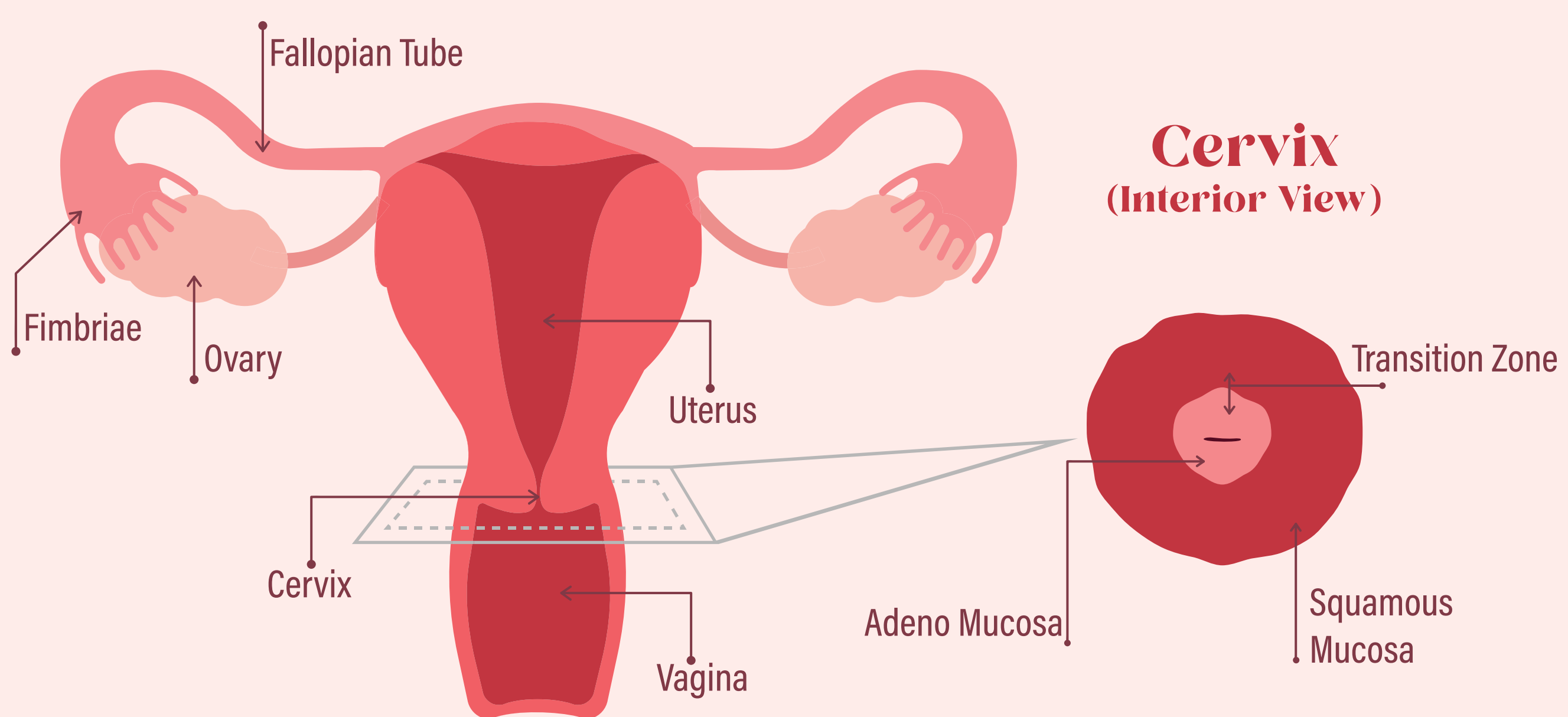
**223**

(2019) In Louisiana alone there were 223 cases of cervical cancer reported

### Side Profile - Pelvic Model



### Front Profile - Pelvic Model



### Signs & Symptoms

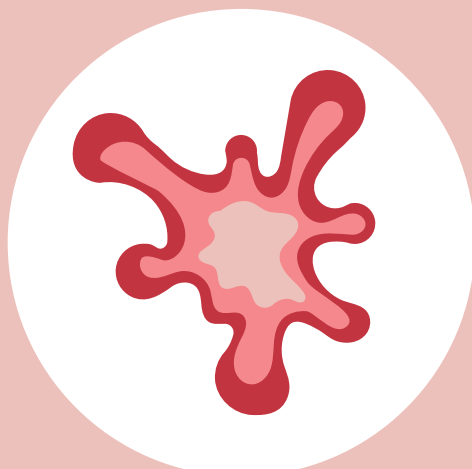
Abnormal Bleeding or Post-Menopausal Bleeding



Discomfort or Pain During Sex



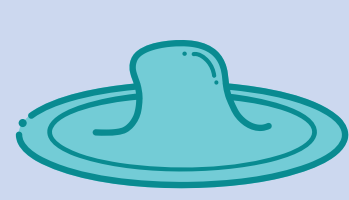
Unusual Discharge



Lower Back Pain

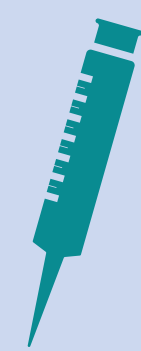


### Preventitive Steps



Practive Safe Sex - engaging in safe sex can help prevent the spread of infection specifically HPV

Smokers have a higher chance of developing cervical cancer. Smoking lowers a persons ability to fight infection



HPV Vaccine is the most effective form of cervical cancer prevention

Having regular cervical screenings give you the greatest chance of finding abnormalities at an early stadge



[www.alcopelandfoundation.org](http://www.alcopelandfoundation.org)